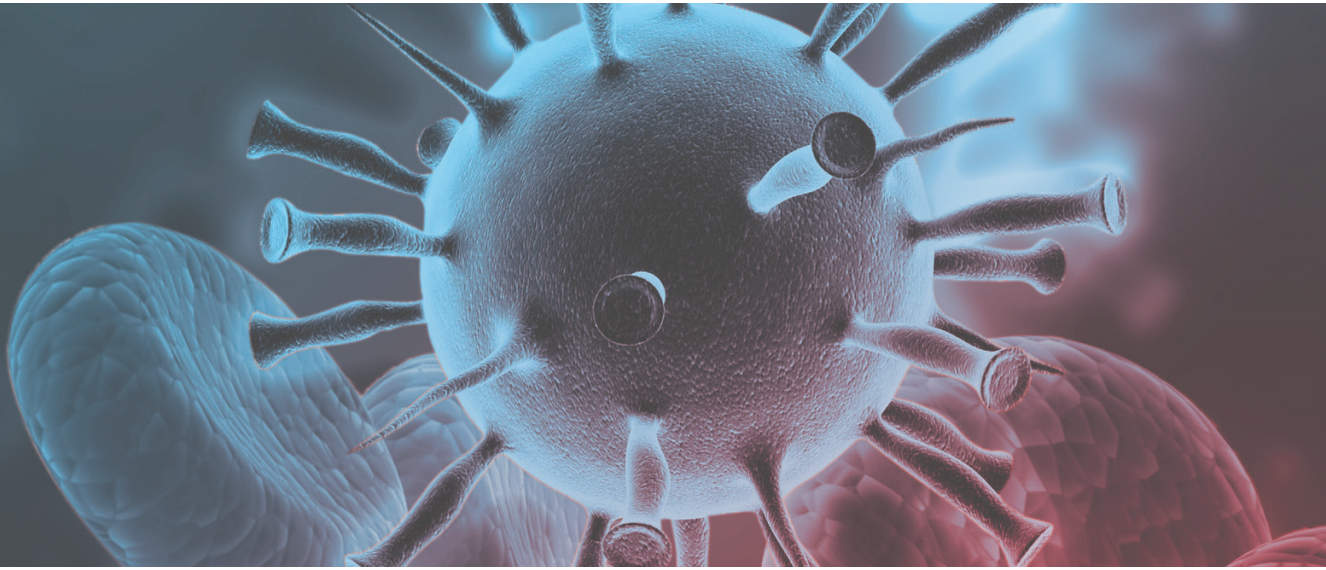


# CORONAVIRUS

## HOW TO PREVENT AND CONTROL



## STEPS TO PREVENTION

You will be aware of the current situation with Coronavirus. As a precaution we would like to remind you on how you can limit the chances of catching the virus.

Generally, Coronavirus can cause more severe symptoms in people with weakened immune systems, older people, and those with long-term conditions like diabetes, cancer and chronic lung disease.

While the risk to the UK population remains low, it is important we introduce precautionary measures to limit the potential spread of infection.



Frequently clean hands using alcohol based hand rub or soap and water.



When coughing and sneezing cover mouth and nose with flexed elbow or tissue – throw tissue away immediately and wash hands.

### OUR ADVICE TO PROTECT BUILDING USERS

- 1 Talk to us about how we can amend the daily cleaning regime to focus on touch points and hygiene areas.
- 2 Make sure levels of hand soap are maintained across the building in washrooms and food areas.
- 3 Look to ensure all staff have access to hand sanitiser and tissues throughout the building.

### WHAT TO DO IF YOU THINK YOU NEED MORE ADVICE

Please contact your Nviro Service team or contact our head office on **02392 370044** or email [enquiries@nviro.co.uk](mailto:enquiries@nviro.co.uk)

# CATCH IT

# BIN IT

# KILL IT